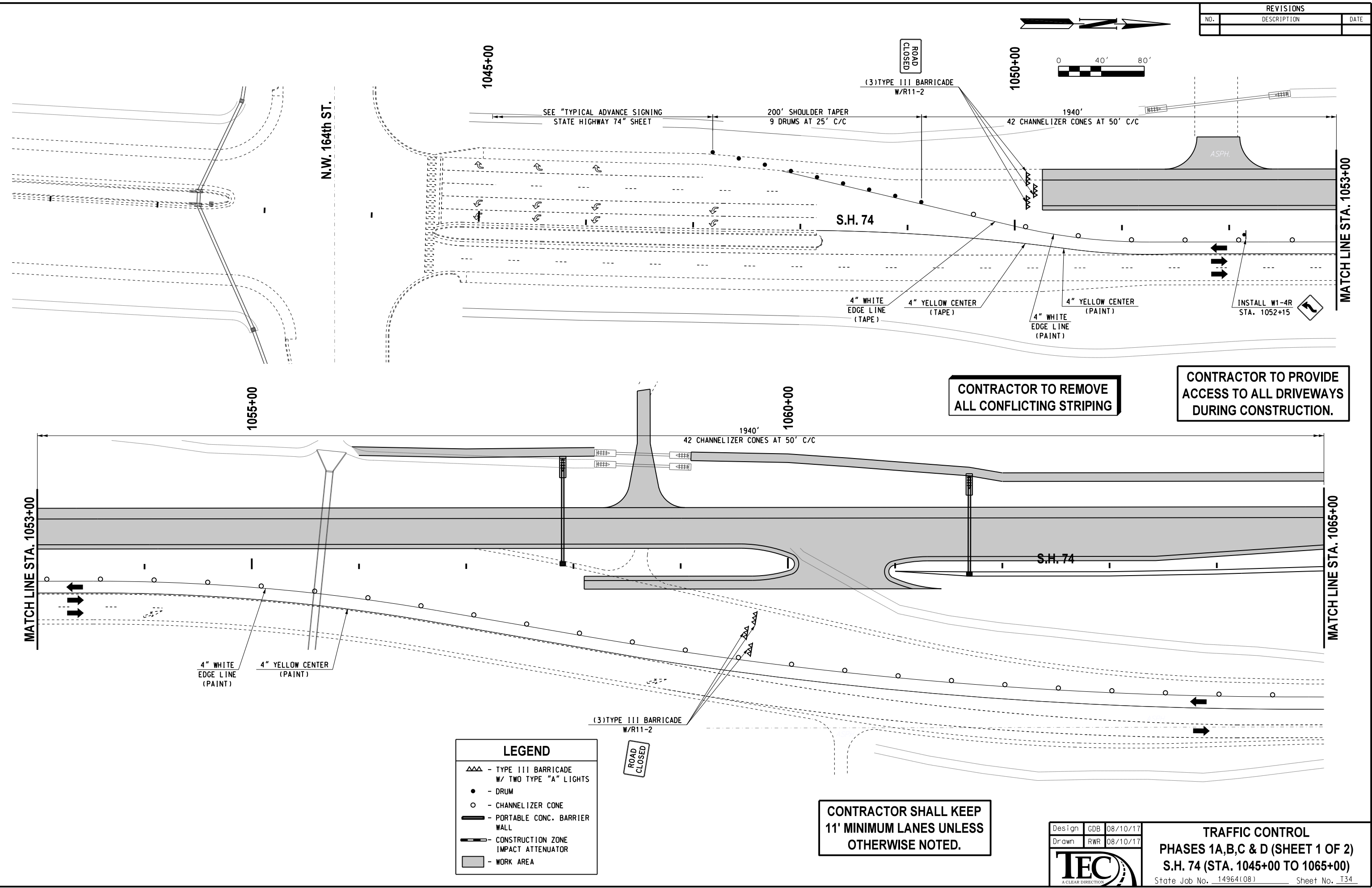
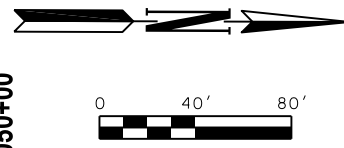


REVISIONS		
NO.	DESCRIPTION	DATE



CONTRACTOR TO REMOVE ALL CONFLICTING STRIPING

CONTRACTOR TO PROVIDE ACCESS TO ALL DRIVEWAYS DURING CONSTRUCTION.

CONTRACTOR SHALL KEEP 11' MINIMUM LANES UNLESS OTHERWISE NOTED.

LEGEND	
△△△	- TYPE III BARRICADE W/ TWO TYPE "A" LIGHTS
●	- DRUM
○	- CHANNELIZER CONE
▬	- PORTABLE CONC. BARRIER WALL
▬	- CONSTRUCTION ZONE IMPACT ATTENUATOR
■	- WORK AREA

Design	GDB	08/10/17
Drawn	RWR	08/10/17

TRAFFIC CONTROL
PHASES 1A, B, C & D (SHEET 1 OF 2)
S.H. 74 (STA. 1045+00 TO 1065+00)
 State Job No. 14964(08) Sheet No. T34

08/10/17 G:\Projects\T-1662B SH 74 @ NW 178th, NW 192nd & NW 206th\CAD\TC PHASE 1A,B,C,D,ISH 74.dgn